

XR5

Floor Mounted Conventional Radiography

The Perfectly
Orchestrated Performance



Stability

Standard H/W Configuration

SID & Angle **DISPLAY**

4.3 " SCREEN



Multi-layer Manual Type **COLLIMATOR**

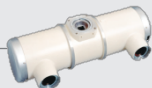
LED LAMP



Rotating Anode **TUBE**

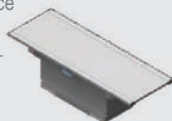
FOCAL SPOT
→ 0.6 / 1.5 mm

ANODE HEAT
→ 200 KHU



Maximum Clinical Workspace **PATIENT TABLE**

4 WAY TABLE
550 lbs. CAPACITY



High Frequency **GENERATOR**

500mA
40kW/1Ø:208/230VAC



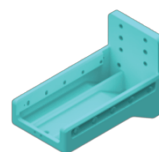
Bold. Sophisticated. Powerful.

Every inch of the XR5, stretching from the triple frames, is an artistic expression of an efficient performance.

01

Anti-Vibration Tube head arm holder

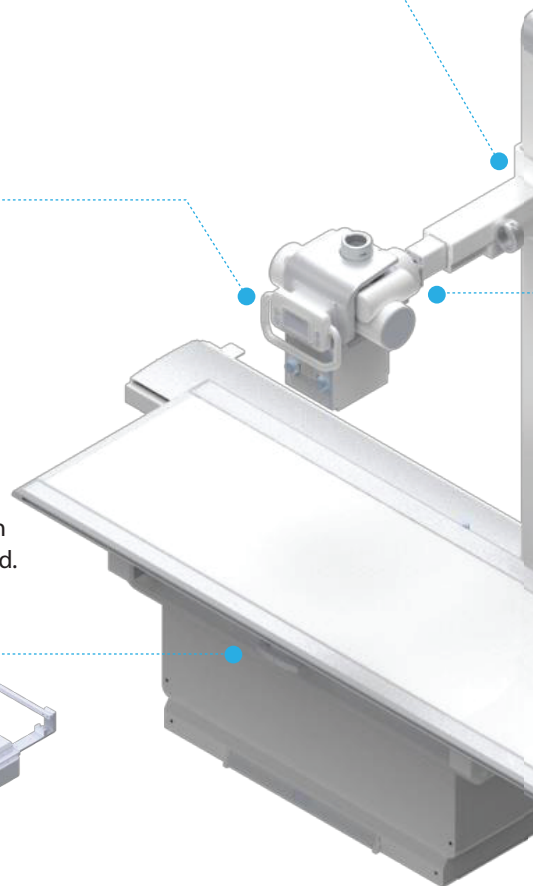
Specially designed Tube head arm holder makes smooth vertical movement and compensates mechanical vibration.



02

Hand Grip Sensor

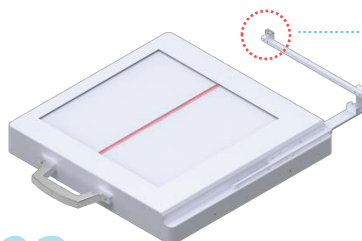
The hand grip sensor relieves you of having to push direction buttons to move the tube stand.



03

Centering Indicator

Easy detection centering with the indicator on Table Bucky



04

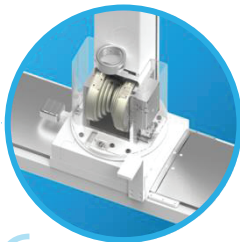
Aluminum Body Frames



05

Quality Bearing & Gears

Effortlessly move the XR5 into any position.



06

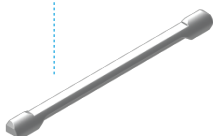
Spring Type Weight Balancer

The XR5 uses a specially designed spring tension counterbalance system with lead weights, making balancing simple and fast as well as environment friendly.

07

Table Edge Frames

Replaceable table edge frame in case of damage or excessive wear. Also designed with rounded edges to prevent possible injuries.



Upgrades

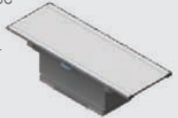


Upgrade Package

Maximum Clinical Workspace

PATIENT TABLE

6 WAY TABLE
660 lbs. CAPACITY
Auto Tracking



Multilayer, Automatic

COLLIMATOR

WHITE LED
Max. 150kVp-4mA



Rotating Anode

TUBE

FOCAL SPOT
→ 0.6 / 1.2mm



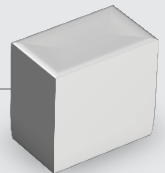
ANODE HEAT STORAGE CAPACITY

→ 300KHU

High Frequency

GENERATOR

650mA
50kW/3Ø:400/480VAC

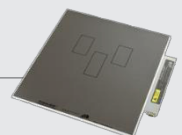


800mA
65kW/3Ø:400/480VAC

DAP¹⁾



AEC²⁾ ION CHAMBER



1) DAP : Dose Area Product

2) AEC : Automatic Exposure Control

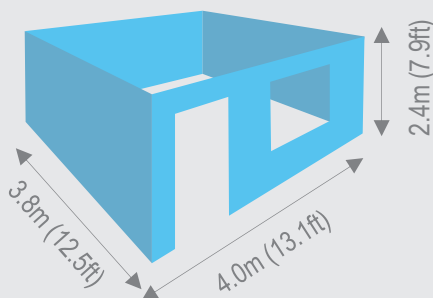
Extensive

Faster Alignment and Reduced handling

When you adopt Edge or Edge^{Air} as wireless detector gives you full advantage to cover any exam required. And it reduces operating time in a busy hospital environment.

Optimal Use of Space

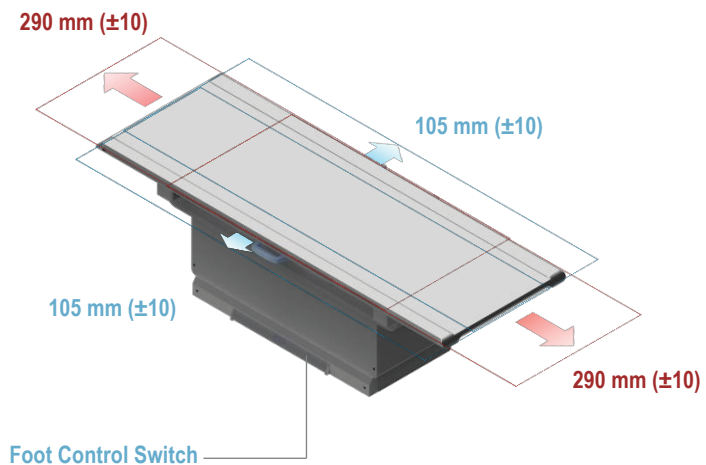
Ergonomic design provides you with optimal use of space, ease of movement with superb value through the best image quality and performance.



The 4-Way Patient Table

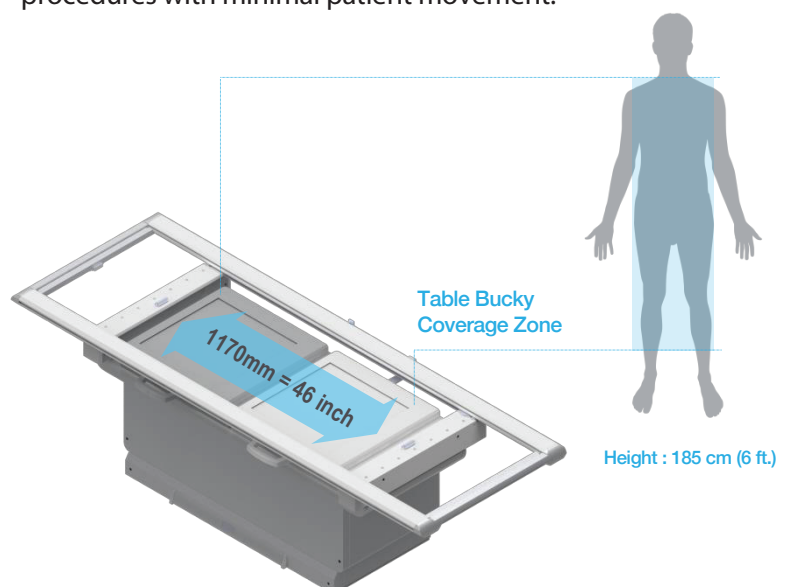
Effortless patient positioning is achieved with the four-way float top table that provides smooth motions.

The ease of positioning elderly, non-ambulatory patients, and/or patients with casts results in substantially increased patient throughput.



Wide Range of Table Bucky Tray

XR5's Table Bucky Tray travels a longer distance than traditional analog designs, it gives you faster exam procedures with minimal patient movement.



Flat Panel Detectors

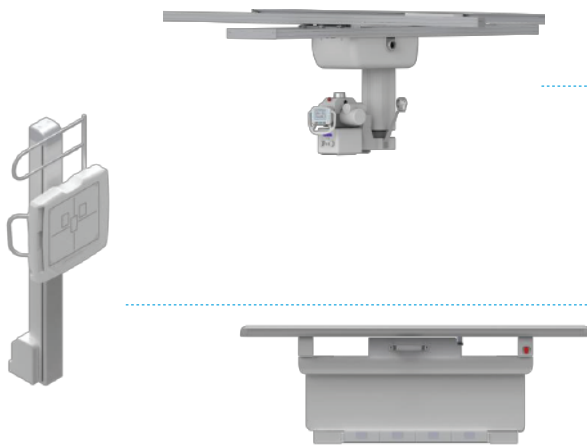


Edge Air

Edge

Made by OSKO in USA

Mechanical Options



Software Option



Optional Items

• EdgeAir (Wireless)

- a) Dimension: 460 x 460 x 15 mm
- b) Active Area: 430 x 430 mm
- c) Pixel Pitch: 140 μ m
- d) Preview Time: ≤ 2 Sec (2x2 binning)
- e) 1.2 m Drop-Tested
- f) Weight: 7.7lb (3.5kg)/include battery

• Edge (Tethered)

- a) Dimension: 460 x 460 x 15.5 mm
- b) Active Area: 430 x 430 mm
- c) Pixel Pitch: 140 μ m
- d) Preview Time: ≤ 2 Sec
- e) Weight: 8.8lb (4.0kg)

01 • Overhead Tube Crane

- a) Assembly weight: 485lbs.(220kg)
 - Longitudinal: 131inch (3320mm)
 - Transverse: 84inch (2136mm)
 - Vertical: 59inch (1500mm)
- b) Touch Panel Console
- c) Motorized vertical movement

02 • Auto Tracking Bucky

03 • 6 Way Elevation Table

- a) Load Capacity: 660 lbs.
- b) Max lift capacity: 550lbs.
- c) Height movement: 515 to 815 mm

• Smart Stitching

Automated long-length image stitching software.

- a) All Dicom format
- b) Vertical, Horizontal.

Gallery



Specification

CONFIGURATION	ITEMS	SPECIFICATION & DESCRIPTIONS			
GENERATOR	Power Output	40kW	50kW	65kW	80kW
	kV Range	40k-150kV	40k-150kV	40k-150kV	40k-150kV
	mA Range	10-500mA	10-650mA	10-800mA	10-800mA
	Input Phase / Voltage	1Φ:208/230VAC 3Φ:208/230VAC 3Φ:400/480VAC	3Φ:400/480VAC		
	Exposure Timer Range	6.3s Max.			
TUBE	Model	E7242		E7252	
	Focal Spot Value	0.6/1.5 mm		0.6/1.2 mm	
	Target Angle	14°		12°	
	Target Diameter	2.9 inch (73.6mm)		2.9 inch (73.6mm)	
	Anode Heat Content	200KHU		300KHU	
	Cooling Method	Natural / Forced Air		Natural / Forced Air	
FLOOR MOUNTED TUBE STAND	Power Required	24V, 3A			
	Tube Stand	76 inch (1,940 mm)			
	SID Range	40 ~ 72 inch (1,000 ~ 1,800 mm)			
	Vertical Travel	58 inch (1,480 mm)			
	Longitudinal Travel	100 inch (2,540 mm)			
	Tube Rotation Range	135° ~ +135°			
	Tube Arm IN / OUT	± 4.7 inch (±120 mm)			
	DAP Ionization & Display	Optional			
TABLE	Model	4Way		6Way	
	Dimensions	90"L(2200mm) x 32"W(806mm)			
	Vertical Stroke	26"(655mm)Fixed		20~32"(515~815mm)	
	Table Movement	Longitudinal (23"/580mm), Transverse(8.2"/210mm)			
	Load Capacity	550 lbs. (250 kg)		660 lbs. (300 kg)	
	Table Bucky Movement	27.5 inch (700mm)			
	AEC	Auto Exposure Control (Optional)			
	Grid	103 Lines (10:1) / 215 Lines(13:1)			
	Autotracking	Optional		Optional	
WALL STAND	Vertical Stroke	15.7" to 74.4"(400 to 1890mm) height of the detector center to the floor			
	AEC	Auto Exposure Control (Optional)			
	Autotracking	Optional			
	Grid	103 Lines (10:1) / 215 Lines(13:1)			

THE BENEFITS OF DIGITAL RADIOGRAPHY

INCREASES THE EFFICIENCY OF TODAY'S RADIOLOGY PRACTICE !

01 

INCREASE PRODUCTION AND SERVICE FLEXIBILITY

Faster digital processing allows for an increased productivity, condensing more flexibility in your schedule

02 

SAVES TIME

View images instantly on your operatory computer, saving staff and patients' time

03 

ABILITY TO SEE MORE PATIENTS

No more film processing time means your per-patient visit time decreases, making room for new patients

05 

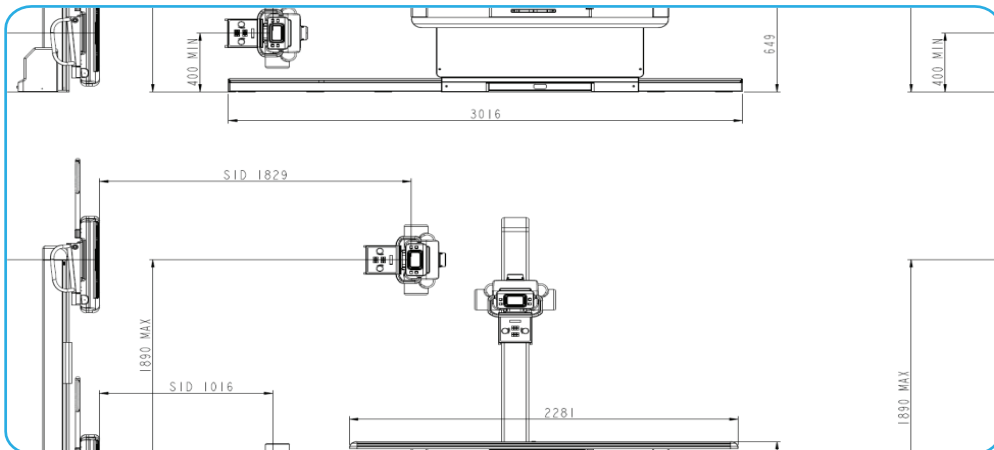
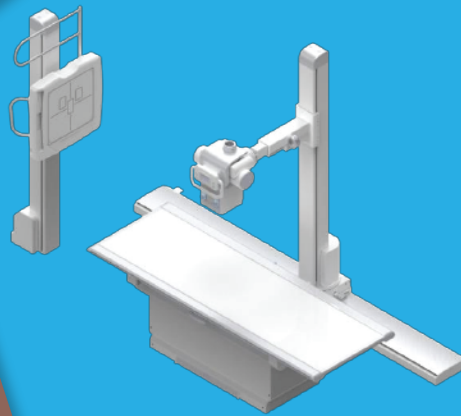
SAVE MONEY

Long-term cost of equipment can work out to less when compared to film processing chemicals, purchasing film, and maintenance.

04 

REDUCED EXPOSURE TO RADIATION

Its about 50 to 90% less than that required for film used in conventional radiography.





www.OSKOmedical.com

OSKO, Inc.

8085 NW 90th Street,
Medley, FL. 33166 U.S.A.
Tel : +1-305-599-7161
E-mail : sales@oskomedical.com

OSKOMEX S.A. DE C.V.

Nápoles 36, Piso 8, Col. Juárez, Del. Cuauhtémoc,
Ciudad de México., C.P. 06600, MÉXICO
Tel : +52-55-5207-8880
E-mail : ventas@oskomedical.com